

Cold Lake Multi-Use Facility

Portage College Board of Governors' Day of Collaboration & Conversation

December 1, 2016



**PORTAGE
COLLEGE**

What Initiated the Project?

- Cold Lake City Council received land donated by Imperial Oil
 - Construct a facility that would unite the community
- Cold Lake – a growing community
 - Demand for recreational space
 - Need for a new high school
 - Need for expanded space for post-secondary learning
- Utilize resources in a cost effective manner
- Brought stakeholders together to discuss a potential joint project

Challenges & Solutions

Challenge – Joint Project with Multiple Stakeholders

Solution – Highly Structured Stakeholder Input

- Multi-Use Campus Steering Committee created with TOR
 - City of Cold Lake, Portage College, Northern Lights Public Schools, Alberta Human Services, Lakeland Catholic School Division and 2 architectural firms
 - Mandate to oversee partnership activities including facility design, advocacy for government, obtaining other financial support, engaging partners & out-of-the-box discussions
 - Excellent communication tool, as top decision makers from all of the stakeholders were involved

The Project – Multi-Use Facility

- Stakeholder discussions led to a 3-way partnership between the City of Cold Lake, Portage College (Ministry - Advanced Education) and Northern Lights Public Schools (Ministry - Education)
- Working together allowed Portage College to access funding from Advanced Education by proposing a P-3 partnership, which fit with government mandate of the day (Note: Funding reduced for ½ of the physical space due to inflationary pressures)
- Facility to advance, promote and encourage opportunities and programs in sport, recreation, wellness, culture and education

Construction (Spring, 2007)



Portage College (Fall, 2016)



Challenges & Solutions

Challenge – Governance of a 3-Way Partnership

Solution – Highly Structured Committees

- Operational Committee
 - Created during the project
 - Tasked with creating a Multi-Use Campus Operating, Management, Maintenance and Use Agreement (June, 2015)
 - Appointed by Governance Committee to address day-to-day operational issues of shared areas & implementation of policies and guidelines
 - Issues & concerns are raised, discussed and resolved – monthly meetings
- Governance Committee
 - Established within the “agreement” with executive representation – yearly meetings
 - Authority to make adjustments to policies and guidelines
 - Discuss current and future expansion opportunities

Challenges & Solutions

Challenges – Day-To-Day Operational Issues

- Use of shared spaces - internal hub, parking spaces, access roads & signage
- Shared services – reception, space booking, security & fire/lock-down drills
- Behavior of students (secondary & post-secondary)

Solutions – Operational Committee

- Consultation on events that impact partners regarding shared areas
- Process to confirm setting of fire/lock-down drills
- Joint use of electronic sign
- City of Cold Lake has employed a Bylaw Officer on-site at the facility

Measurable Success – City Of Cold Lake

- ▶ Positive impact on community uniting recreation, secondary and post-secondary educational opportunities in one location
- ▶ Increased availability to recreational activities for community members
- ▶ Ability to host large community activities:
 - ▶ 2010 Alberta Winter Games & 2015 Saskatchewan wildfire victims
 - ▶ Concerts, sporting events and community events (e.g. Remembrance Day Celebration)
- ▶ Increased access to post-secondary education for Cold Lake residents and those in the region

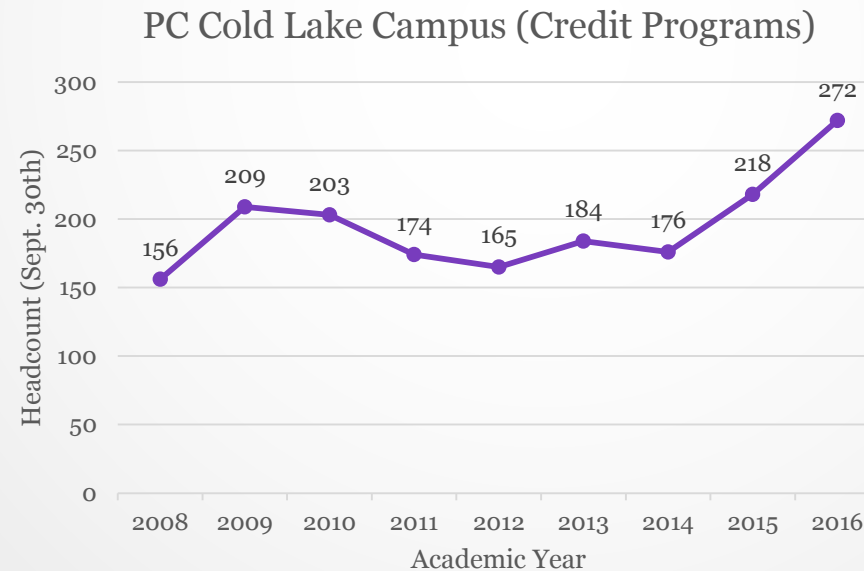
Measurable Success – Northern Lights Public Schools

- ▶ Joint location supports dual credit opportunities for students with Portage College
 - ▶ E.g. Free university courses to qualified high school students
- ▶ 13 post-secondary programs available for local high school students
- ▶ Science lab demonstrations at Portage College for high school students and teachers
 - ▶ E.g. DNA labs conducted
- ▶ Increased communication between high school counselors and College staff
 - ▶ E.g. Consultation on secondary and post-secondary course scheduling

Measureable Success – Portage College

▶ Enrolment growth

- ▶ 3 programs offered prior to 2008/9 (old campus location downtown)
- ▶ 5 programs in 2008/9 & 13 programs in 2016/17 (existing campus location)
- ▶ Enrolment growth (Agresso Student Data, October 1, 2016)



Measurable Success – Together

- ▶ Completed the facility with grand opening on August 20, 2008
- ▶ Stakeholders involved in original discussions resulted in reduced costs in construction & shared costs in operational services – e.g. parking, signage
- ▶ Sustained partnership that continues today
- ▶ Ongoing discussions and continued communication through established committees
- ▶ Formal structure supports future expansion of Imperial Park

Future Opportunities

- ▶ Facility expansion for recreation at Imperial Park
 - ▶ Mach 1 Skate Park (complete)
 - ▶ Ice rink, field house & community use spaces
 - ▶ Energy Centre space for gymnastics and dance
 - ▶ New artificial turf field
- ▶ Facility expansion for programming at Portage College
 - ▶ Additional expansion to post-secondary training for local community
 - ▶ Trades related training, degree completion opportunities & career programs
 - ▶ 10 years removed, we are too small
- ▶ How can growth be supported by partnering?

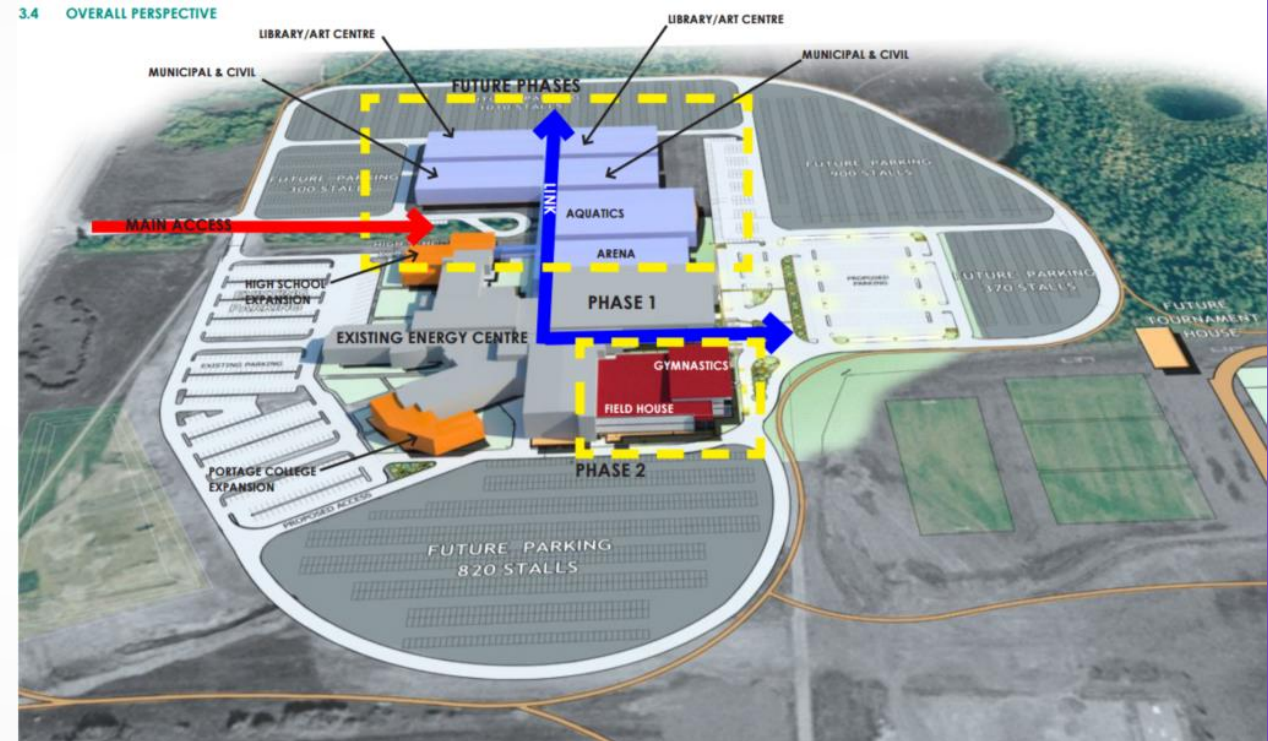
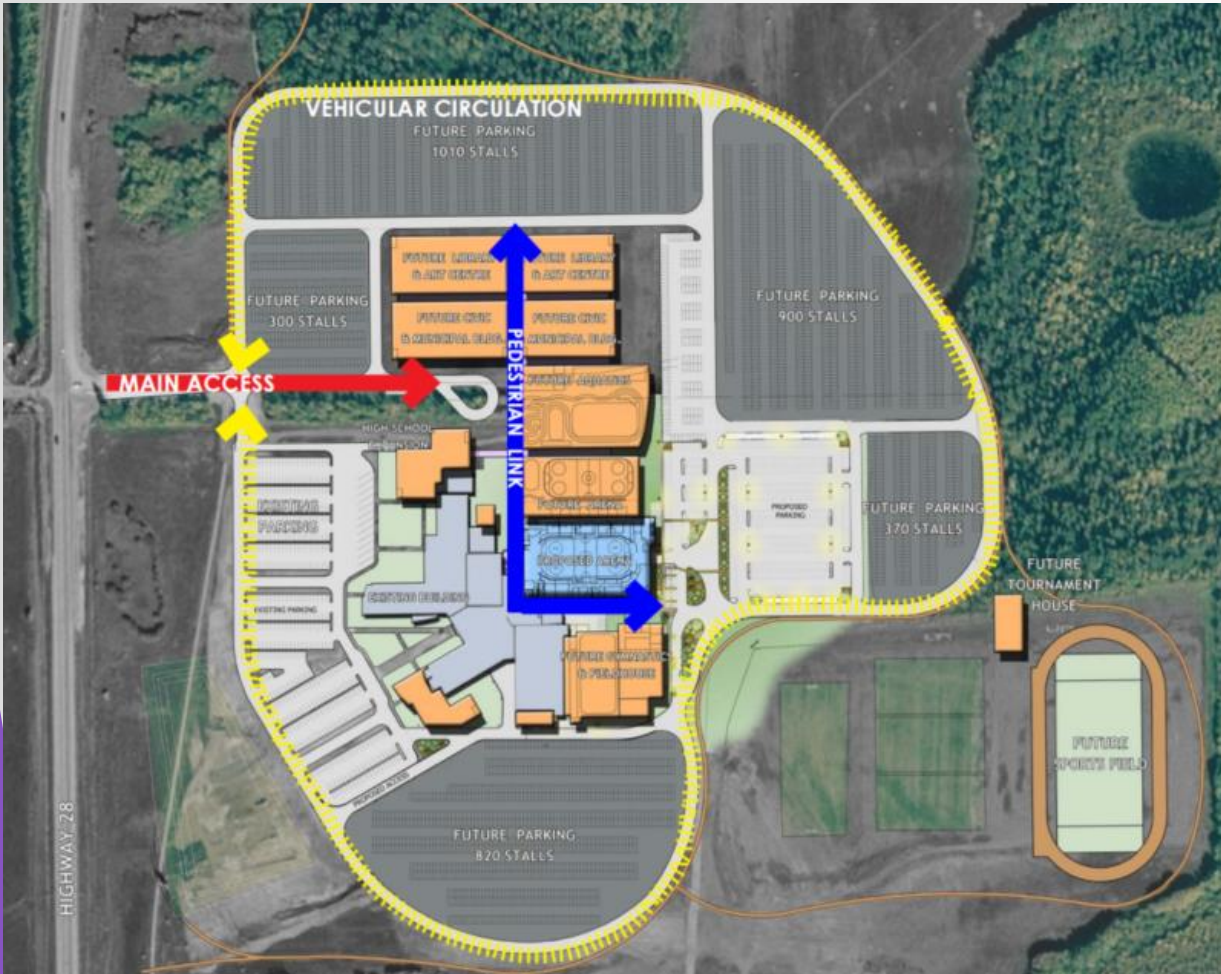
Portage College Expansion (conceptual)



PROPOSED PORTAGE COLLEGE ADDITION
Cold Lake Alberta



Imperial Park Expansion (conceptual)



Thank You to Our Partners

